

Emergency Response vs Incident Response

The background of the slide features a series of diagonal stripes in various shades of blue, creating a dynamic, geometric pattern that frames the central text.

Emergency Response vs Incident Response

- 29 CFR 1910.120 and 1926.65 (q) Hazardous Waste Operations and Emergency Response
- 29 CFR 1910.38 Emergency Action Plans
- CPL 02-02-073 (8/27/2007) Inspection Procedures for 29 CFR 1910.120 and 1926.65, Paragraph (q): Emergency Response to Hazardous Substance Releases

Emergency Situations

- High concentrations of toxic substances.
- IDLH environments.
- Situations that present an oxygen deficient atmosphere.
- Fire and Explosion hazards.
- Situations that require evacuation of an area.
- Situations that require immediate attention because of the danger posed to employees.

Emergency Action Plans

- Elements of an emergency action plan
- 29 CFR 1910.38
 - Procedures for reporting a fire or other emergency.
 - Procedures for emergency evacuation, including type of evacuation and exit route assignments.
 - Procedures to be followed by employees who remain to operate critical plant operations before they evacuate

Emergency Action Plans

- Elements of an emergency action plan
- 29 CFR 1910.38
 - Procedures to account for all employees after evacuation.
 - Procedures to be followed by employees performing rescue or medical duties.
 - Name or job title of every employee who may be contacted by employees who need more information about the plan or an explanation of their duties under the plan.

Emergency Action Plans

- Employee alarm systems
- Training
 - Review on the EAP elements/procedures.
 - When the plan is developed.
 - When the employee is initially assigned to a job.
 - When the employees responsibilities under the plan have changed.
 - When the plan is changed.

Emergency Response to hazardous substance releases

- Elements of an emergency response plan
- 29 CFR 1910.120(q)(2)
 - Pre-emergency planning and coordination with outside parties.
 - Personnel roles, lines of authority, training and communication.
 - Emergency recognition and prevention.
 - Safe distances and places of refuge.

Emergency Response to hazardous substance releases

- Elements of an emergency response plan
- 29 CFR 1910.120(q)(2)
 - Site security and control.
 - Evacuation routes and procedures.
 - Decontamination.
 - Emergency medical treatment and first aid.
 - Emergency alerting and response procedures.
 - Critique of response and follow-up.

Emergency Response to hazardous substance releases

- Elements of an emergency response plan
- 29 CFR 1910.120(q)(2)
 - PPE and emergency equipment.
 - Emergency response organizations may use the local emergency response plan or the state emergency response plan or both, as part of their emergency response plan to avoid duplication. (SARA Title III items may be substituted into their plans, if properly addressed)

Training

- First Responder Awareness Level (2 – 4 hours)
 - First link in the chain (a chain is as strong as....)
 - Likely to witness or discover a release
 - Notifying proper authorities
 - Identifying the material (if possible)
 - Leave the danger area...let other coworkers know

Training

- First Responder Operations Level (8 hours)
 - Does what the awareness level can do.
 - Responds in a defensive manner.
 - Not necessarily to stop a release but minimize it.
 - Keep it from spreading, if possible.
 - If contaminated by response, it's beyond their scope.
 - Can assist in decontamination (if trained)

Training

- Hazardous Materials Technician (24 hours)
 - Knowledgeable of the hazards and PPE.
 - Responds in a offensive manner.
 - Trained to stop a release and minimize it.
 - Keep it from spreading, if possible.
 - If contaminated by response, trained to do so.
 - Entry and back-up recon and/or approach point of release.

Training

- Hazardous Materials Specialist (24 hours)
 - Can do what the HazMat Technician can do.
 - Knowledgeable of the hazards and PPE.
 - Can respond in an offensive manner.
 - Trained to lead HazMat Techs and/or
 - Act a liaison to federal or state agencies and/or
 - To be the specialist in specific hazards/releases.
 - Assists entry and back-up personnel.

Training

- On-Scene Incident Commander (24 hours)
 - Trained up to the Operations level (8hrs).
 - Knowledgeable of the hazards and PPE.
 - Knowledgeable in the employer's ER plan.
 - Trained in the implementation of the local ERP
 - Knows of the State ERP and of the Federal Regional Response Team.
 - Understands the need of decontamination.
 - Assists entry and back-up personnel, if necessary.

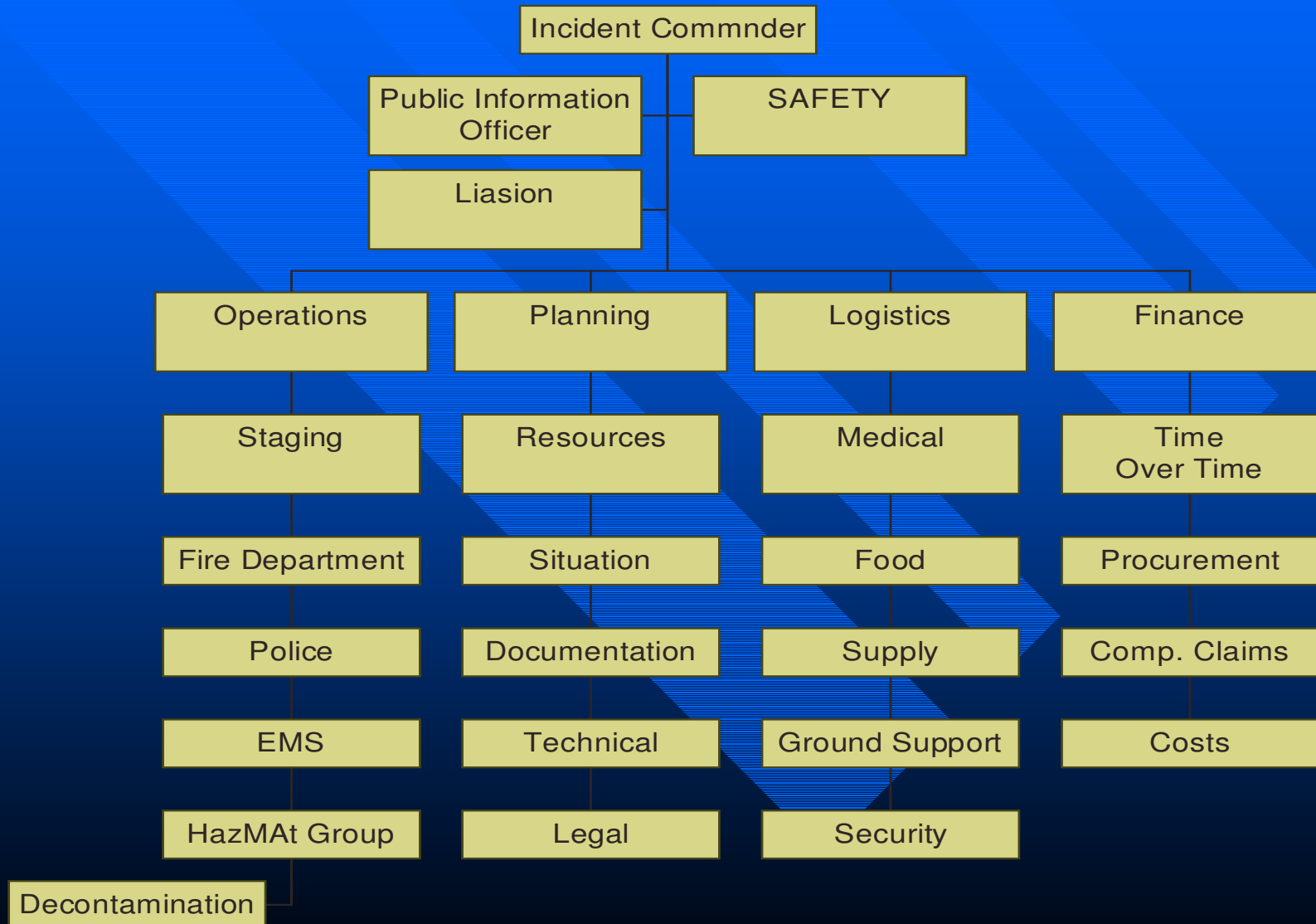
Priorities During an Emergency Response

- Self
- Coworker
- Public
- Environment
- Property
- Operations

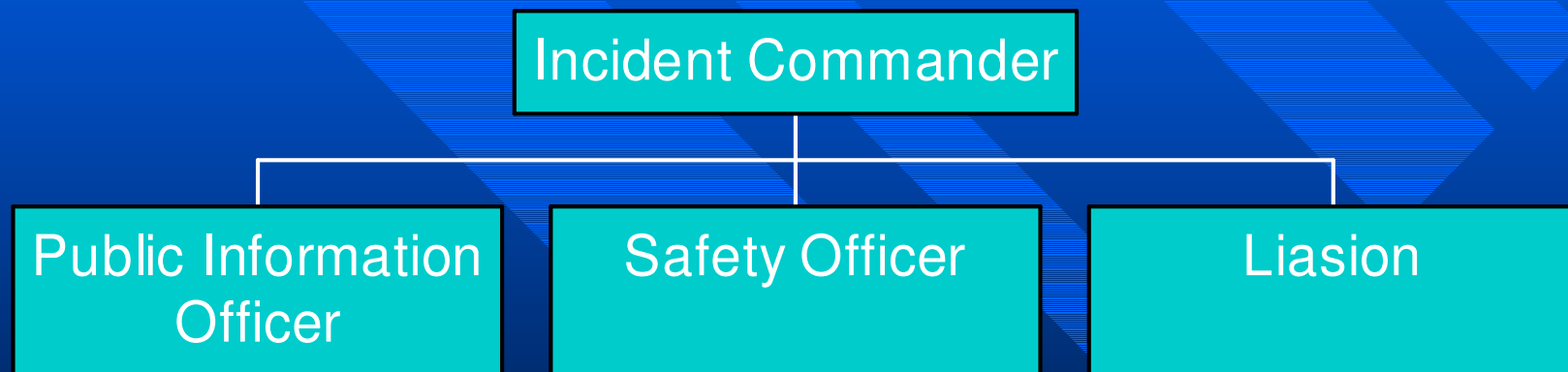
INCIDENT COMMAND SYSTEM

The background features a blue gradient that transitions from a lighter blue at the top to a darker blue at the bottom. Overlaid on this gradient are several diagonal stripes of a slightly different shade of blue, creating a textured, geometric pattern.

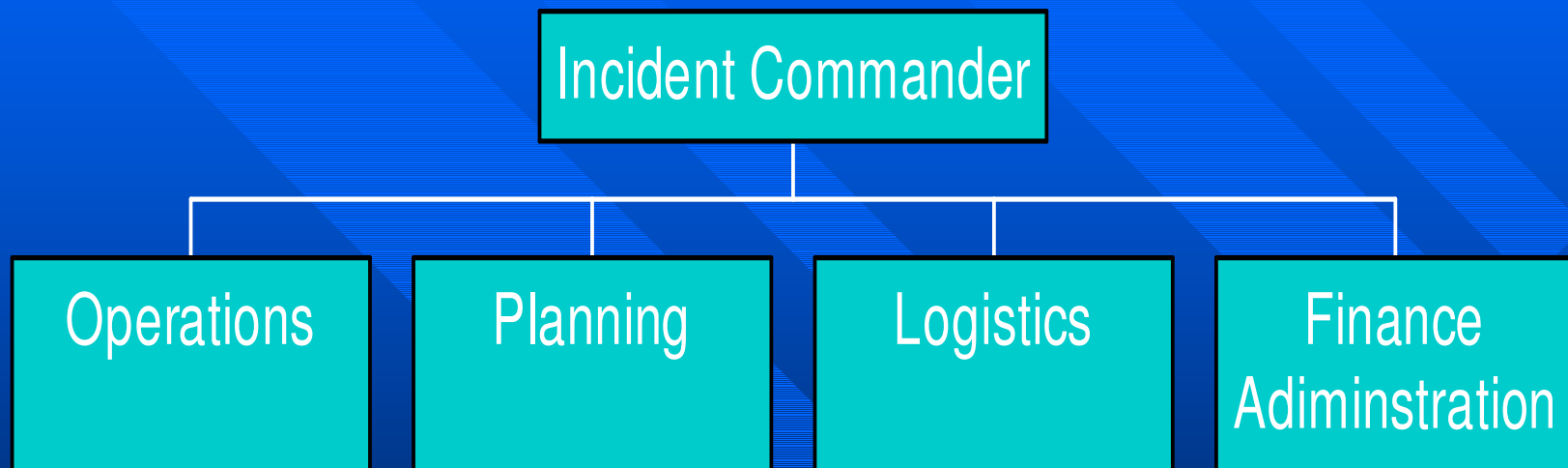
INCIDENT COMMAND



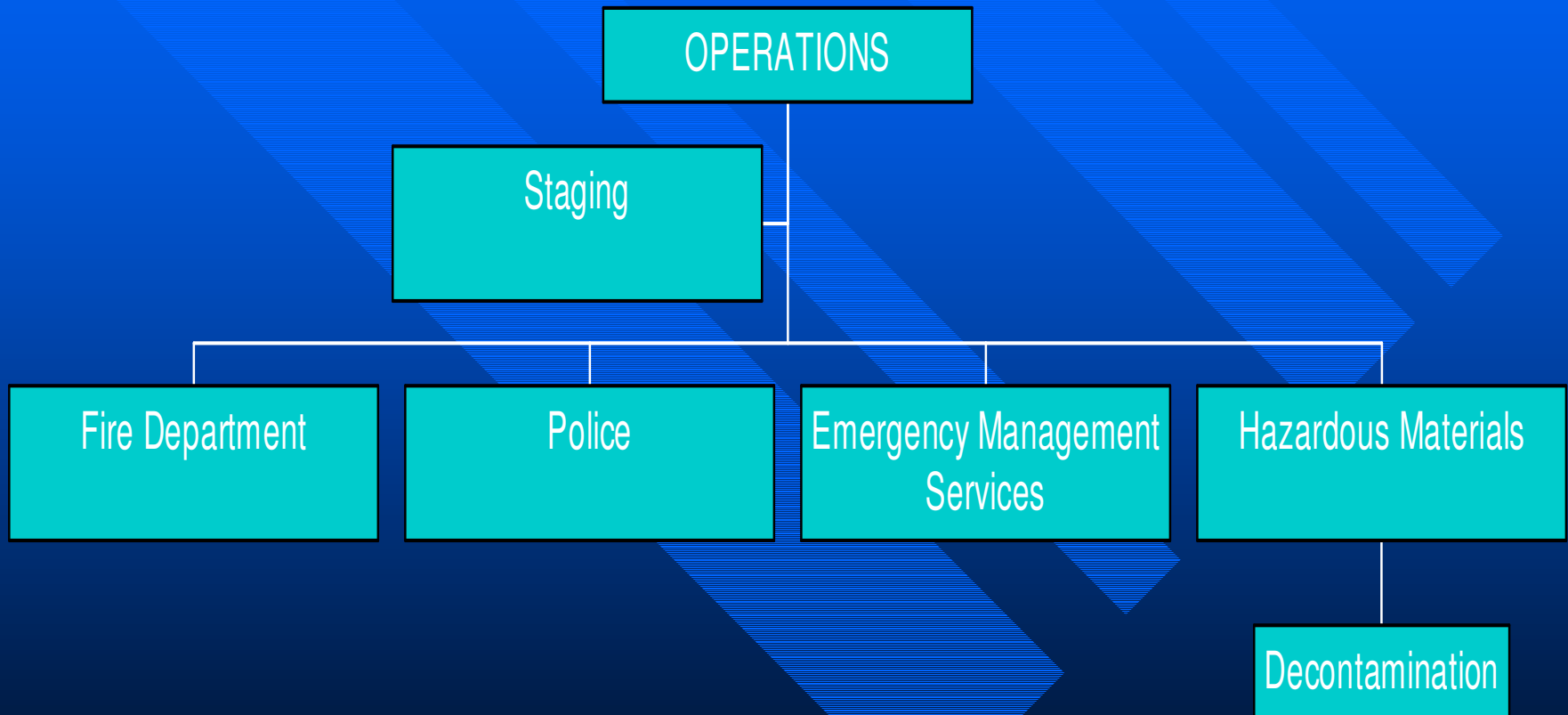
COMMAND STAFF



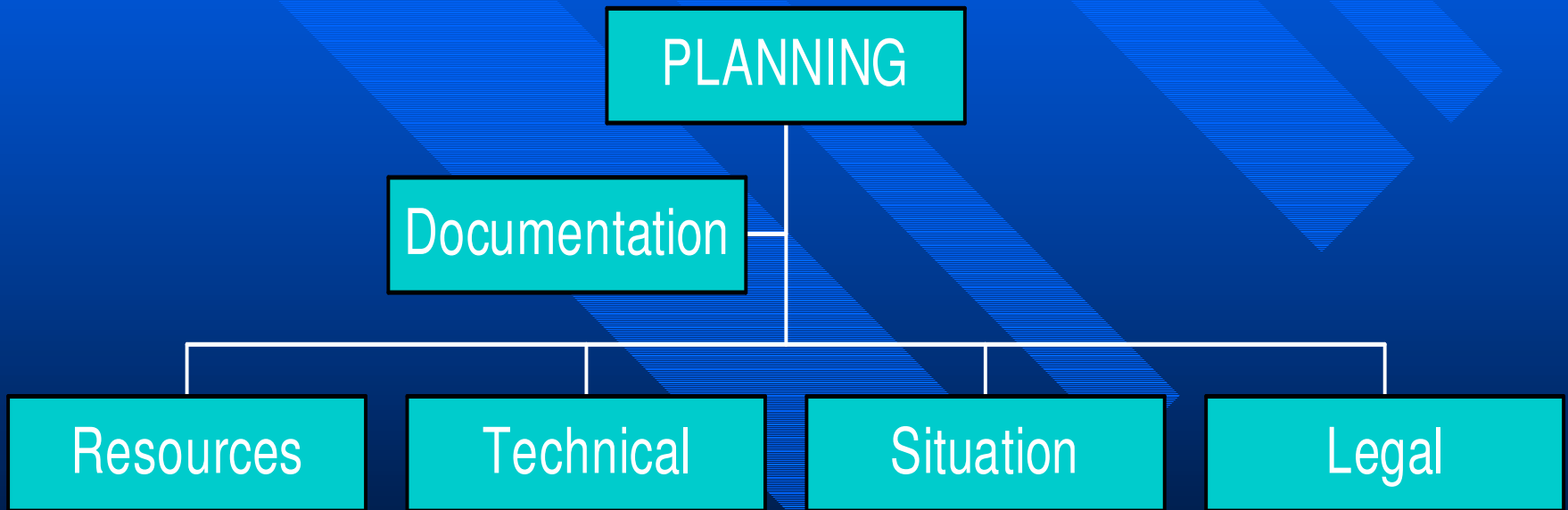
GENERAL STAFF



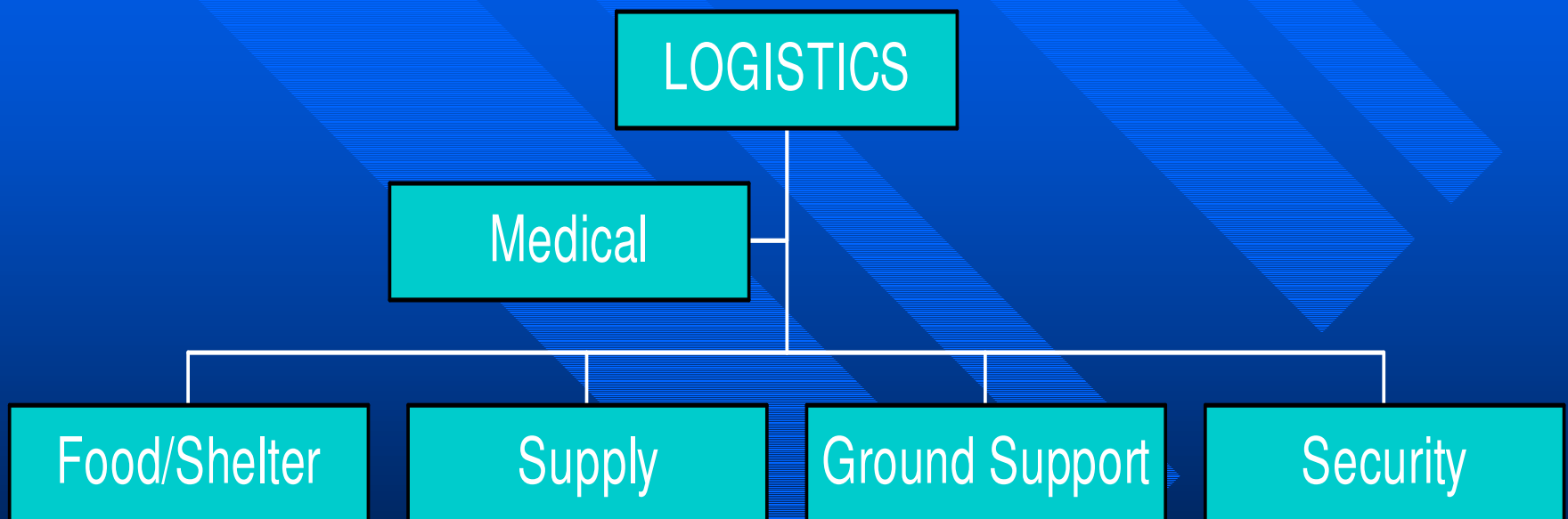
OPERATIONS



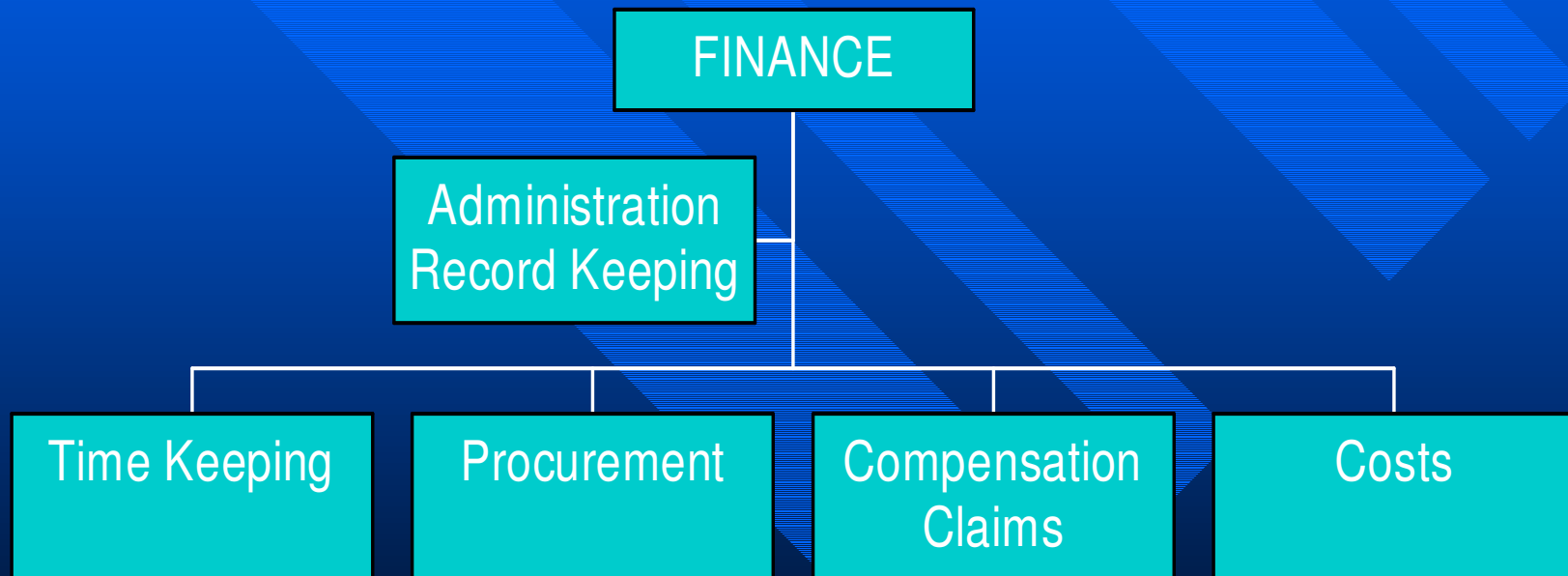
PLANNING



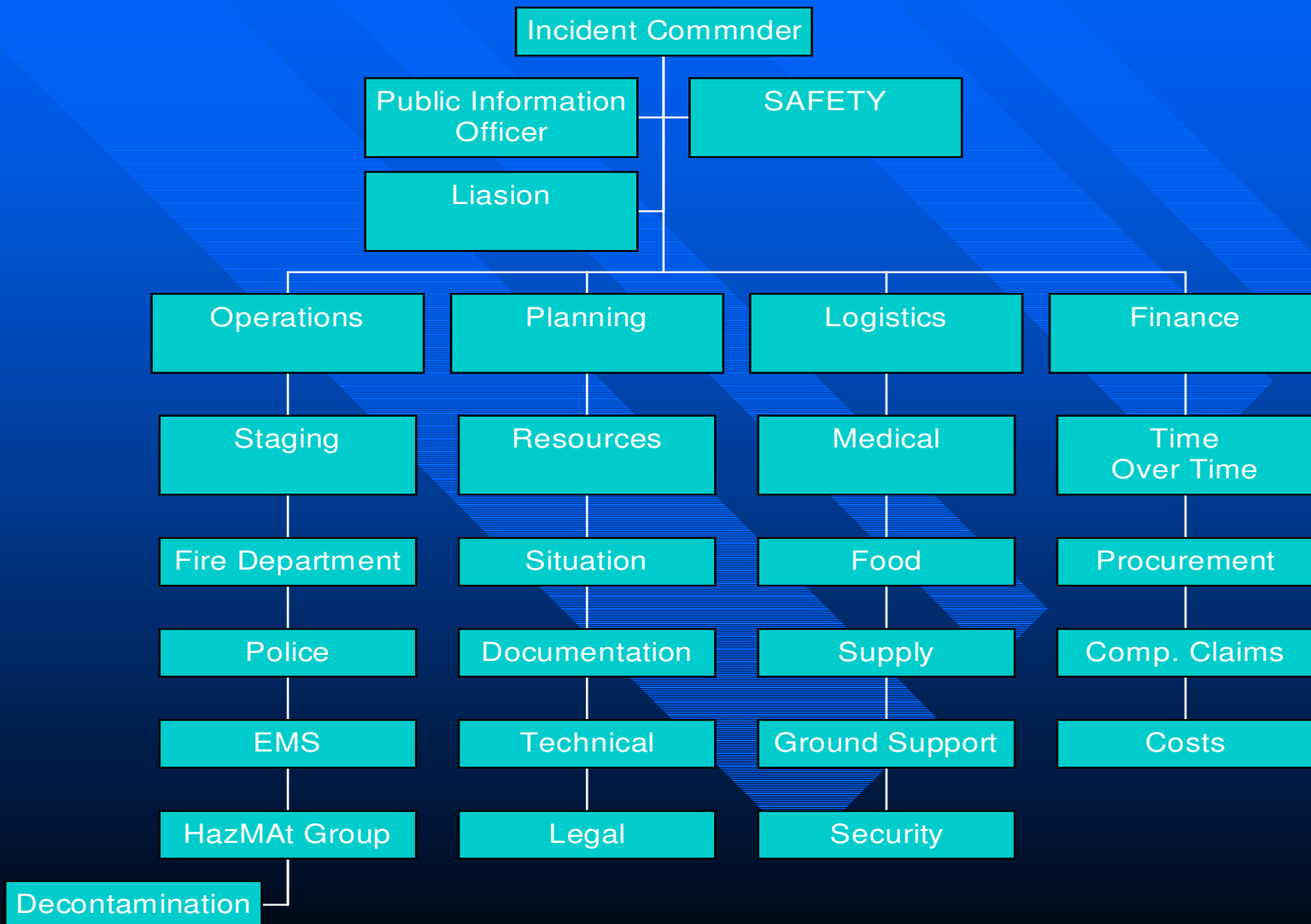
LOGISTICS



FINANCE/ADMINISTRATION



INCIDENT COMMAND



Emergency Response

DRILLS

Emergency Response - Drills

- Have an objective defined
 - PPE use / operation
 - Response time (of various teams)
 - Knowledge of response or operations
 - Coordination of outside responders
 - Chain-of-Command exercise

Emergency Response - Drills

- Planned vs Surprise drills
- Paper (table-top) vs actual drills

Emergency Response - Drills

Planned Drills

PLANNED DRILLS

■ PROS

- Response personnel prepared
- Equipment Ready
- Researched problem

■ CONS

- Known date and time
- Lack of spontaneity
- No sense of urgency

SUPRISE DRILLS

■ PROS

- Response personnel tested
- Equipment knowledge tested
- Actual response times *
- Coordination tested

* For this drill

■ CONS

- Personnel availability
- Equipment availability and operation

Table Top Exercises

■ Pros

- Limit personnel
- Limit equipment
- No resources used
- Close Communications
- Key personnel are tested/trained/orientated

■ Cons

- Lack of 'realism'
- Times/material/equipment are simulated
- Actual response(s) cannot be measured
- Outside resources not physically involved

Actual Drills

■ Pros

- Numerous Personnel
- Equipment used
- Resources used/called/involved
- Communication use
- All personnel involved are tested/trained/orientated
- Critique on-going

■ Cons

- Time constraints
- Material/personnel/resources not available (if needed)
- Set-up and tear down/clean-up of exercise
- Outside resources not available
- Possible costs may be involved

Debriefing

- As soon as the emergency/exercise has ended.
- State the exercise/emergency situation that took place.
- State who was involved ad/or responded.
- Assign an individual for questions to be addressed.
 - Incident related documents
 - Sole person for information

Debriefing

- Questions and comments about the response.
- Evaluations/notes to be taken
- Away from distractions and convenient
- Any exposures or injuries are noted
- Any concerns are documented (to be addressed at the critique)

Debriefing

- An overview of the exercise is reviewed.
- The responding personnel/agency's are recognized and involvement reiterated.
- State when critique will be conducted (should be next shift or soon...not too much time after)
- Thank everyone for their participation.

Critique

- An overview of the exercise is reviewed
 - Response times and actions are noted
 - Objective met? (if an exercise) *
 - Learning experience
 - NOT Witch Hunt (if problems are found, address them)
 - Identify weaknesses
 - List areas of improvement
 - Improve efficiency
- * If objective wasn't met?.....

Critique

- *Suggestions and comments noted*
- *Document for training (or recognition) purposes*
- *Build Up:*
 - *Trust*
 - *Cooperation*
 - *Preparedness*
 - *Sharing information*

Critique

Follow-up:

- » With a point-of-contact
 - » Information (rumor) control
 - » Medical Surveillance
 - » Sampling
 - » Decontamination
-
- Feedback from participants
 - Mechanism to re-evaluate objectives NOT met.
 - Up date Emergency Response Plan, if necessary

ANY QUESTIONS ??